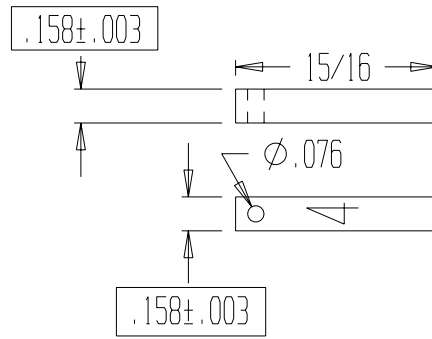


BOXED DIMENSIONS ARE MINIMUM  
 CHARACTERISTICS TO BE VERIFIED  
 FOR RECERTIFICATION  
 RECERTIFICATION TOLERANCE +/- .005"

VERIFICATION DIMENSION



VERIFICATION DIMENSION

4 mm standard for  
 tread worn hollow gage

MATERIAL: Steel  SCALE = 1X	WINCHESTER INDUSTRIES INC.			
	4 MM STANDARD			
	SIZE A	Job#	DWG NO. W401D6	Disk
CUSTOMER			ENG JCD 04/02/2004	