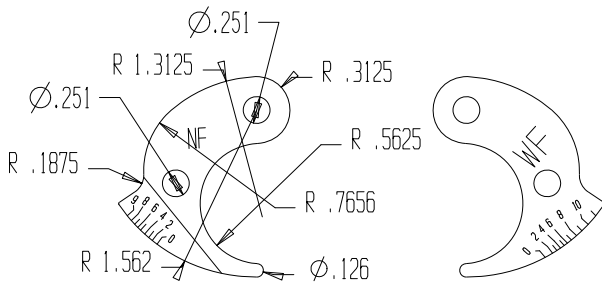
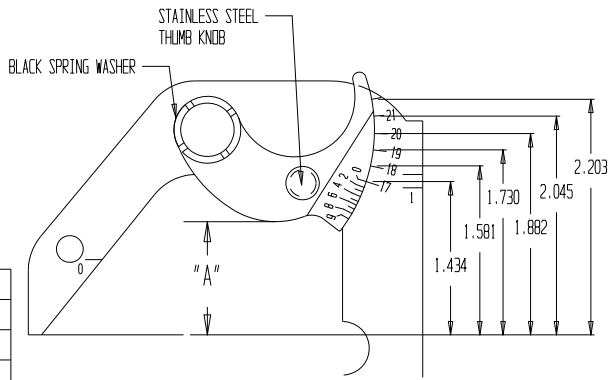


FINGER RADII CENTERS	
0.3125	(0.00, 0.00)
0.251A	(0.00, 0.00)
0.251B	(-0.755726, -0.685488)
1.3125	(0.0536604, -0.999073)
0.7656	(-0.29881, -0.573978)
1.562	(0.00, 0.00)
0.126	(0.00, -1.49899)
0.5625	(0.0332779, -0.874367)
0.1875	(-1.24331, -0.610423)



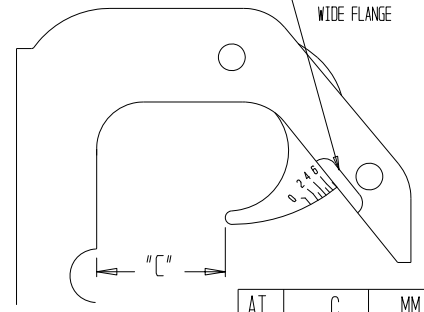
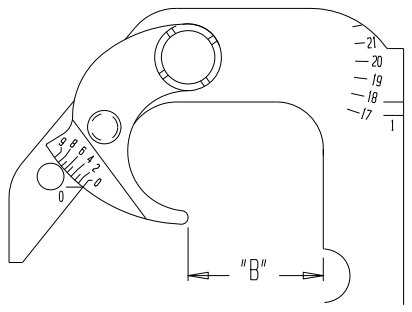
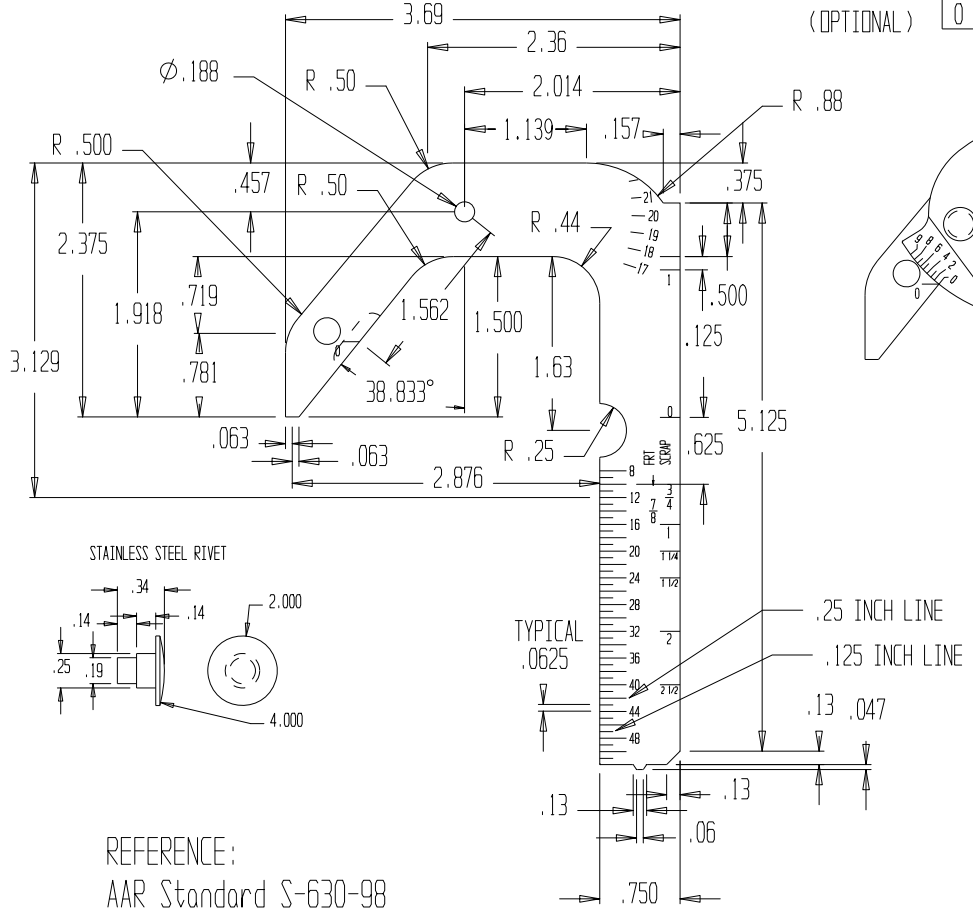
WIDE FLANGE MARKINGS (OPTIONAL)

	A	1/16	MM
0 AT 22	1.375	22	34.92
0 AT 21	1.313	21	33.35
0 AT 20	1.250	20	31.75
0 AT 19	1.188	19	30.18
0 AT 18	1.125	18	28.58
0 AT 17	1.063	17	27



WIDE FLANGE MARKINGS (OPTIONAL)

PROVIDE RELIEF WHEN MARKED FOR WIDE FLANGE



AT	B	MM
0	1.264	32.11
2	1.210	30.73
3	1.168	29.67
4	1.120	28.45
5	1.070	27.18
6	1.034	26.26
7	0.995	25.27
8	0.951	24.16
9	0.894	22.71

AT	C	MM
0	1.483	37.67
2	1.408	35.76
3	1.364	34.65
4	1.323	33.60
5	1.283	32.59
6	1.248	31.70
7	1.203	30.56
8	1.142	29.01
9	1.077	27.36
10	0.997	25.32
11	0.896	22.76

MANUFACTURE TOLERANCE +/- .005
RECERTIFICATION TOLERANCE: +/- .010

REFERENCE:
AAR Standard S-630-98

FOR BOTH
NARROW AND WIDE FLANGE

SCALE: .5X

WINCHESTER INDUSTRIES INC.

STEEL WHEEL GAGE (NF&WF)

SIZE A	Job#	DWG NO. W601A	Disk	REV D
CUSTOMER			ENG DJJ	06/12/2014